

Installing the unit

- Using appropriate hardware, mount unit to rack.
- Plug the PDU into appropriately rated and protected branch circuit receptacles.
- Plug in devices to be powered by the PDU.
- Power on devices that are powered by the PDU. Sequential power up is recommended to avoid high in-rush current.

Configuring IP addressable units

The PDU is equipped with an RJ45 Ethernet port for attachment to an existing network. The PDU is configured with the following default network settings to allow unit configuration:

- IP address:
192.168.123.123
- Subnet Mask:
255.255.255.0
- Gateway:
192.168.123.1

The local PC network connection must be configured as follows:

- IP Address:
192.168.123.x (where x is 2-253, except 123)
- Subnet Mask:
255.255.255.0
- Gateway:
<leave blank>

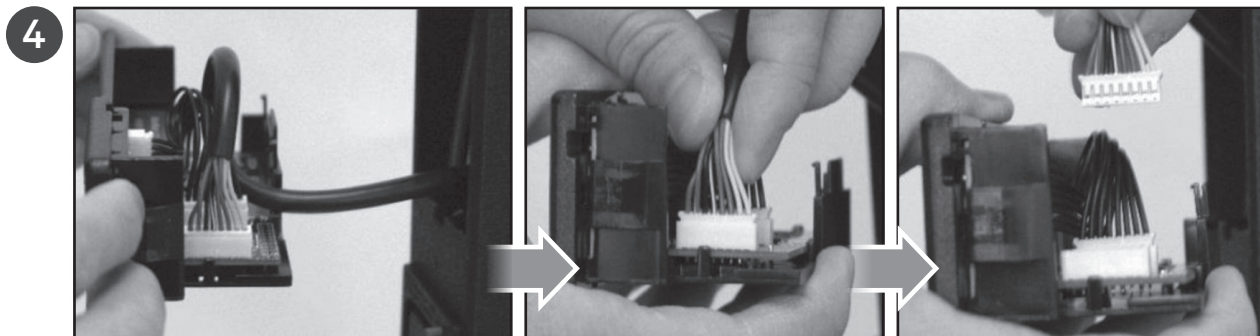
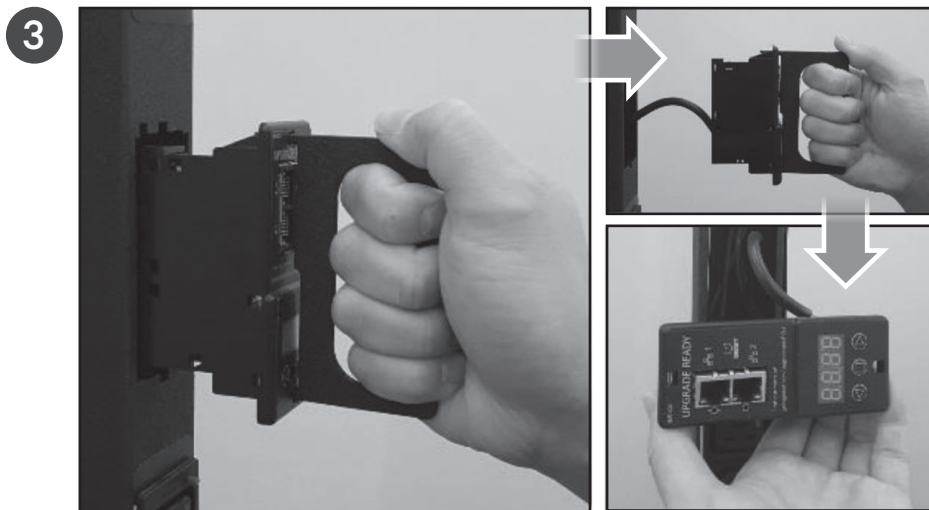
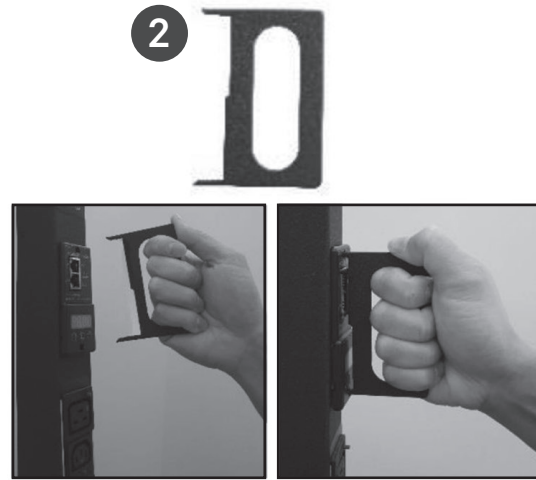
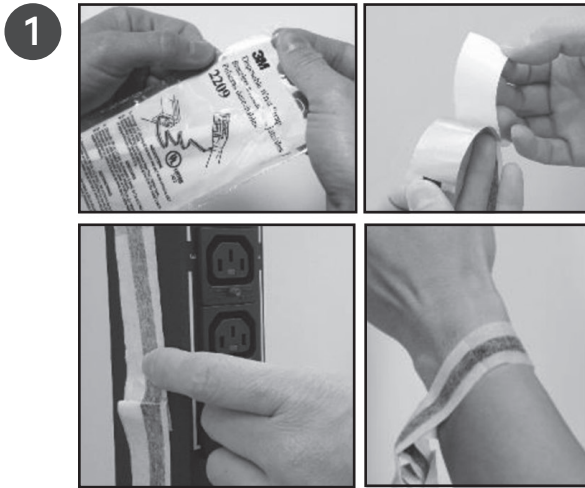
Environmental

TEMPERATURE		
Operating	10°C (50°F) min	60°C (140°F) max
Storage	-25°C (-13°F) min	65°C (149°F) max

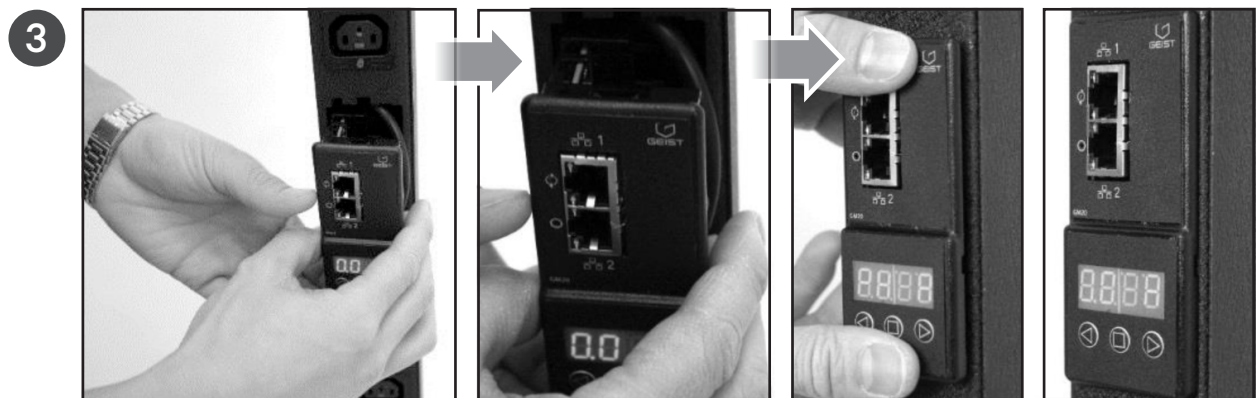
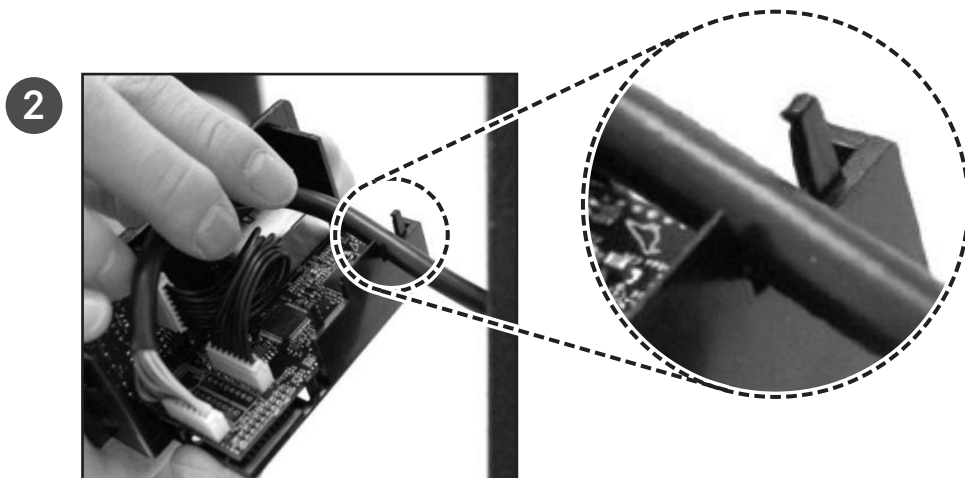
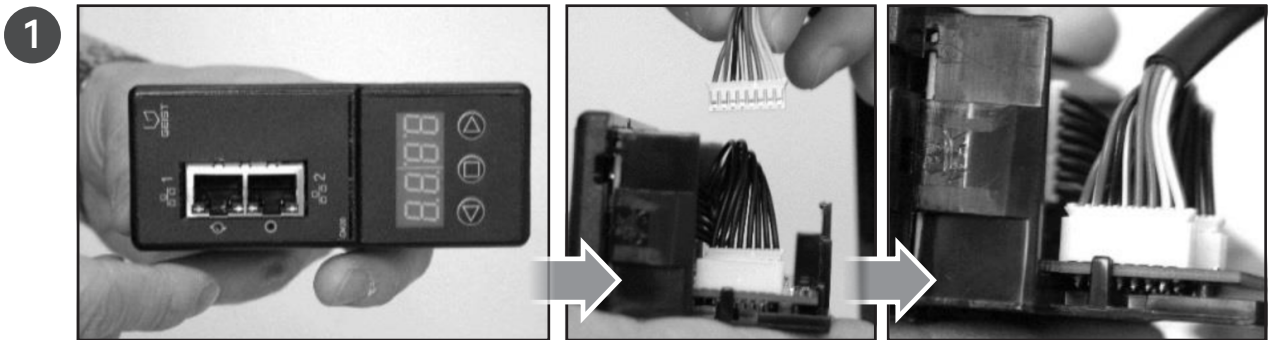
HUMIDITY		
Operating	5% min	95% max (non-condensing)
Storage	5% min	95% max (non-condensing)

ELEVATION		
Operating	0 m (0 ft) min	3050m (10,000 ft) max
Storage	0 m (0 ft) min	15240 m (50,000 ft) max

REMOVAL



INSTALLATION





To contact Vertiv Technical Support: visit www.VertivCo.com

© 2018 Vertiv Co. All rights reserved. Vertiv and the Vertiv logo are trademarks or registered trademarks of Vertiv Co. All other names and logos referred to are trade names, trademarks or registered trademarks of their respective owners. While every precaution has been taken to ensure accuracy and completeness herein, Vertiv Co. assumes no responsibility, and disclaims all liability, for damages resulting from use of this information or for any errors or omissions. Specifications are subject to change without notice.

